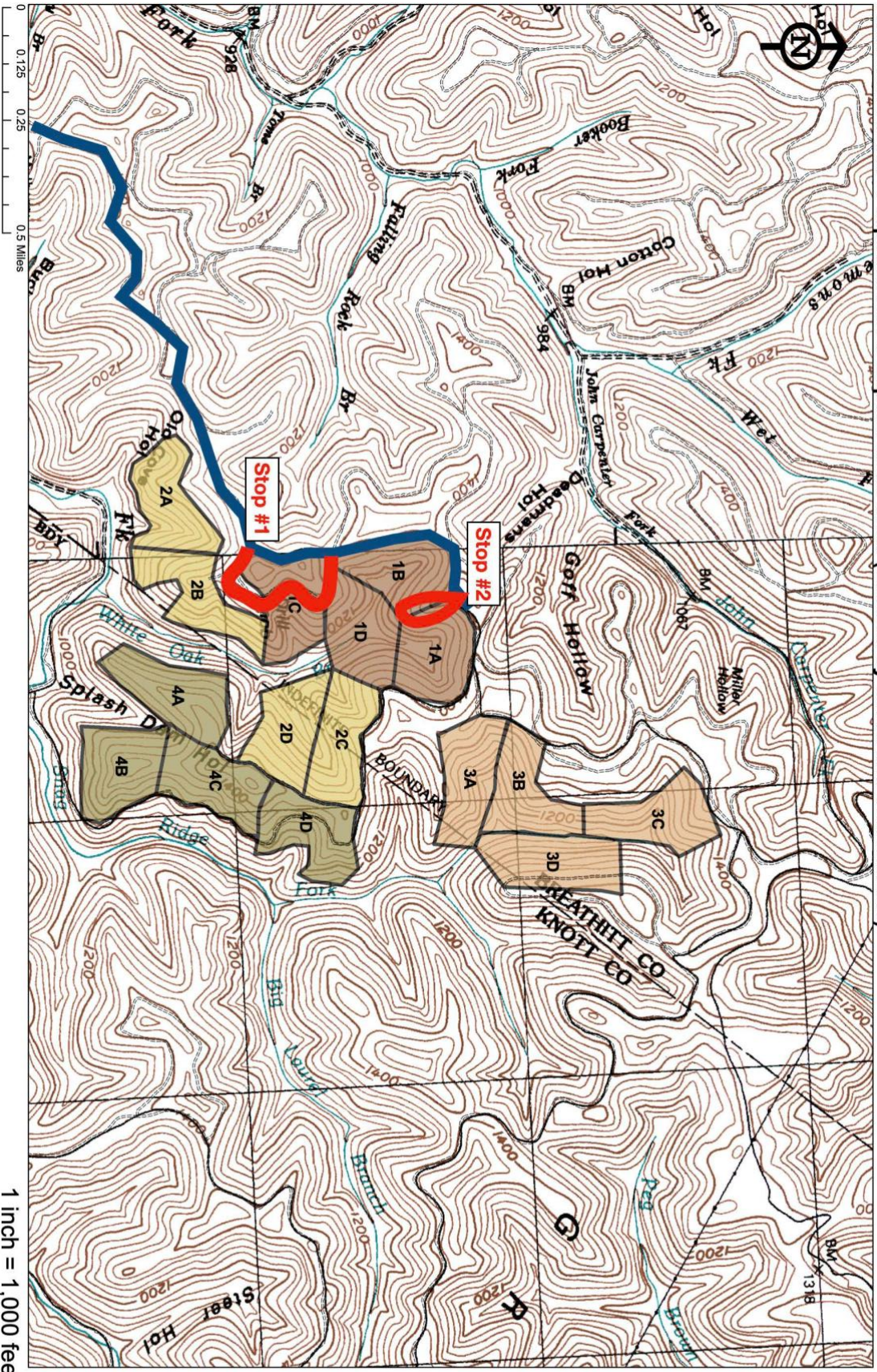




## Robinson Forest Adaptive Silviculture for Climate Change Sitewide Goals and Objectives:

- Manage for compositionally and structurally diverse sustainable forested ecosystems.
  - Emphasize oak regeneration on low to intermediate productivity sites where oak seedlings and saplings are most competitive.
  - Maintain diverse tree species assemblages on high productivity sites, such as coves and mesic sites.
  - Establish multi-age/cohort stands to promote structural diversity.
  - Enhance regeneration of species in decline on the landscape (e.g., yellow pines) as a means of promoting diversity across the range of site conditions.
  - Use silvicultural strategies to promote heterogeneous stand conditions a landscape scale.
  - At the watershed-level, promote a range forest successional stages to encourage heterogeneous habitat types of forest-dependent wildlife.
  - Increase the area of early-successional forest habitat (age class <20 years old).
  - Maintain and promote mature forest types for wildlife species, such as cerulean warbler and Kentucky warbler, that are low-level disturbance specialists.
- Consider visual aesthetics where timber harvesting is recommended.
- Support Kentucky's timber industry by promoting important commercial species such as white oak.
- Mitigate risks of invasive species establishment and spread.
  - Establish monitoring for invasive insects such as spongy moth, hemlock woolly adelgid, and Asian longhorn beetle.
- Mitigate risks associated with wildfire.
  - Promote fire-adapted species such as oaks and pines on drier sites more likely to burn.
- Sustain and promote wildlife diversity across the forest.
  - Ensure forest management activities promote diversity from understory to overstory.
  - Protect state and federally recognized threatened and endangered species such as the Kentucky arrow darter (*Etheostoma spilotum*) and the Indiana bat (*Myotis sodalis*).
- Employ all applicable Kentucky best management practices (BMPs) during timber harvest.
- Support demonstration and science delivery.
  - Demonstrate sustainable forest management under climate change.
  - Provide demonstration stands and support outreach.
  - Support long-term research.
  - Establish monitoring for future forest health threats.
  - Provide opportunities to support a diverse network of researchers and managers.
  - Create opportunities to engage with private landowners on issues related to climate change adaptation.

Robinson Forest - Proposed ASCC Experimental Units (Labeled by Block and Unit Number)



-  Walking Tour
-  Ridge Road

1 inch = 1,000 feet