



Forest Service
U.S. DEPARTMENT OF AGRICULTURE

Taylor Park Management Goals, Objectives, and Desired Future Conditions

Taylor Park Adaptive Silviculture for Climate Change (ASCC) Workshop

July 6-8, 2022

Outline

- Forest Plan Direction
- Fire Management (Potential Operational Delineations)
- Taylor Park EA
 - Objectives & DFCs
 - Soil & Water Design Criteria
 - Wildlife Design Criteria

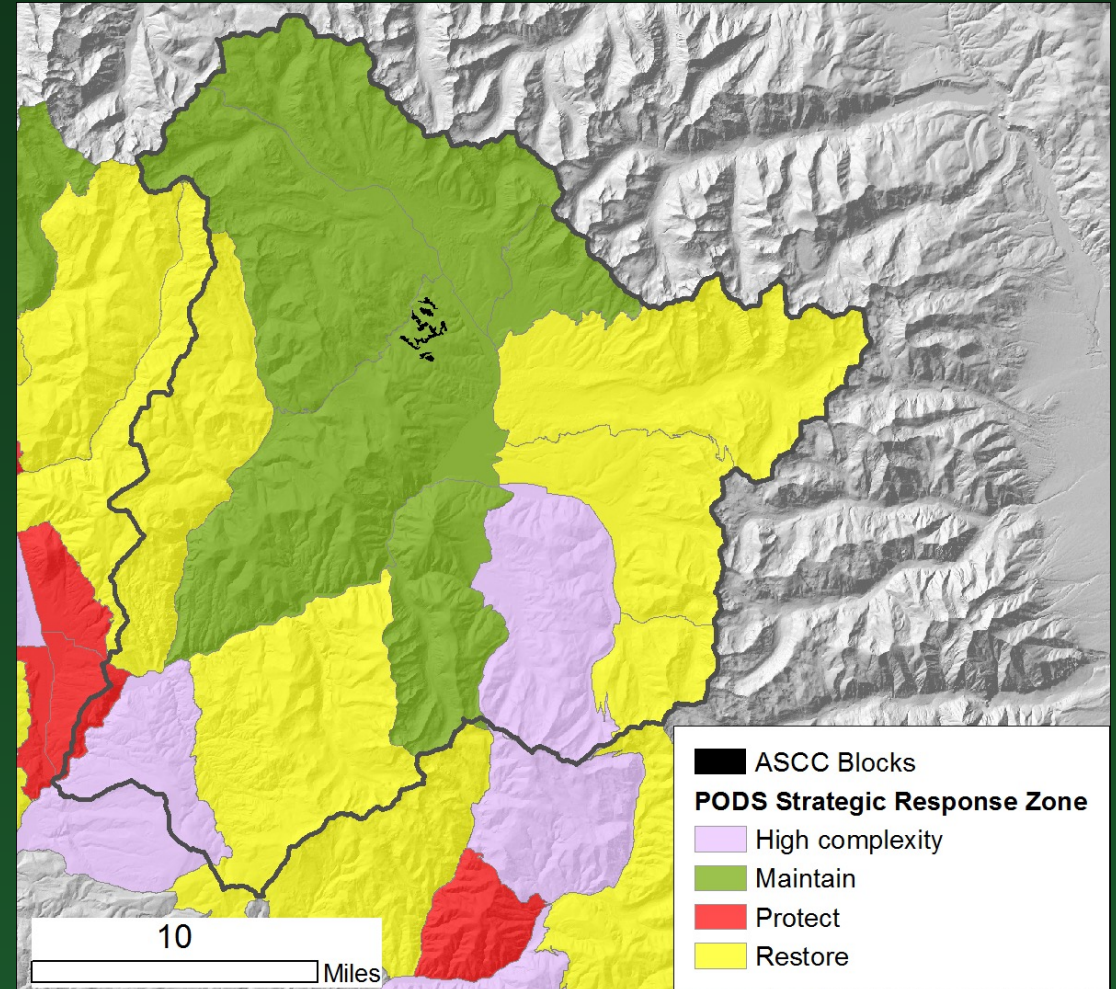
Forest Plan Direction

2021 Draft Revised Forest Plan:

FW-DC-ECO-03: Despite changing and uncertain future environmental conditions, ecosystems maintain all of their essential components. Areas of rapidly changing climate support functioning ecosystems dominated by species native to the context area, though perhaps new to that specific location. Areas of climate refugia continue to support species historically present; have high ecological integrity, are resilient to future conditions, allow for species migration, and have low or no undesirable anthropogenic impacts

PODs (Potential Operational Delineations)

- **Maintain** – Fire under the right conditions can be managed for resource benefits
- **Restore** – Mechanical or Rx fire treatments may be needed as a precursor to the reintroduction of fire
- **Protect** – Fire should be suppressed and excluded where possible



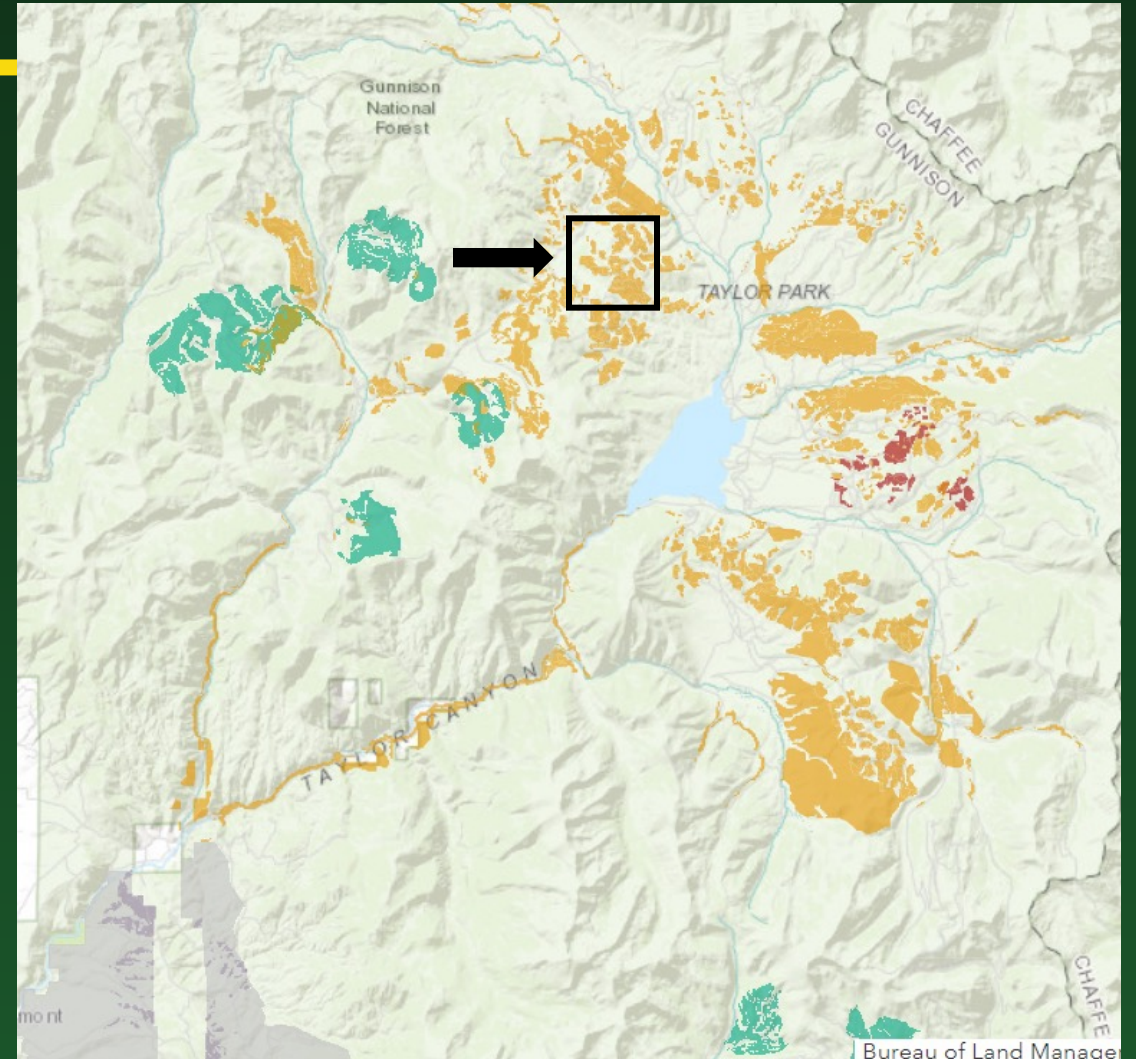
Taylor Park EA

- NEPA decision (2020) approving commercial timber harvest, non-commercial mechanical treatments, and prescribed fire on roughly 20,000 acres across the Taylor Park landscape.
- Uses an adaptive implementation process.



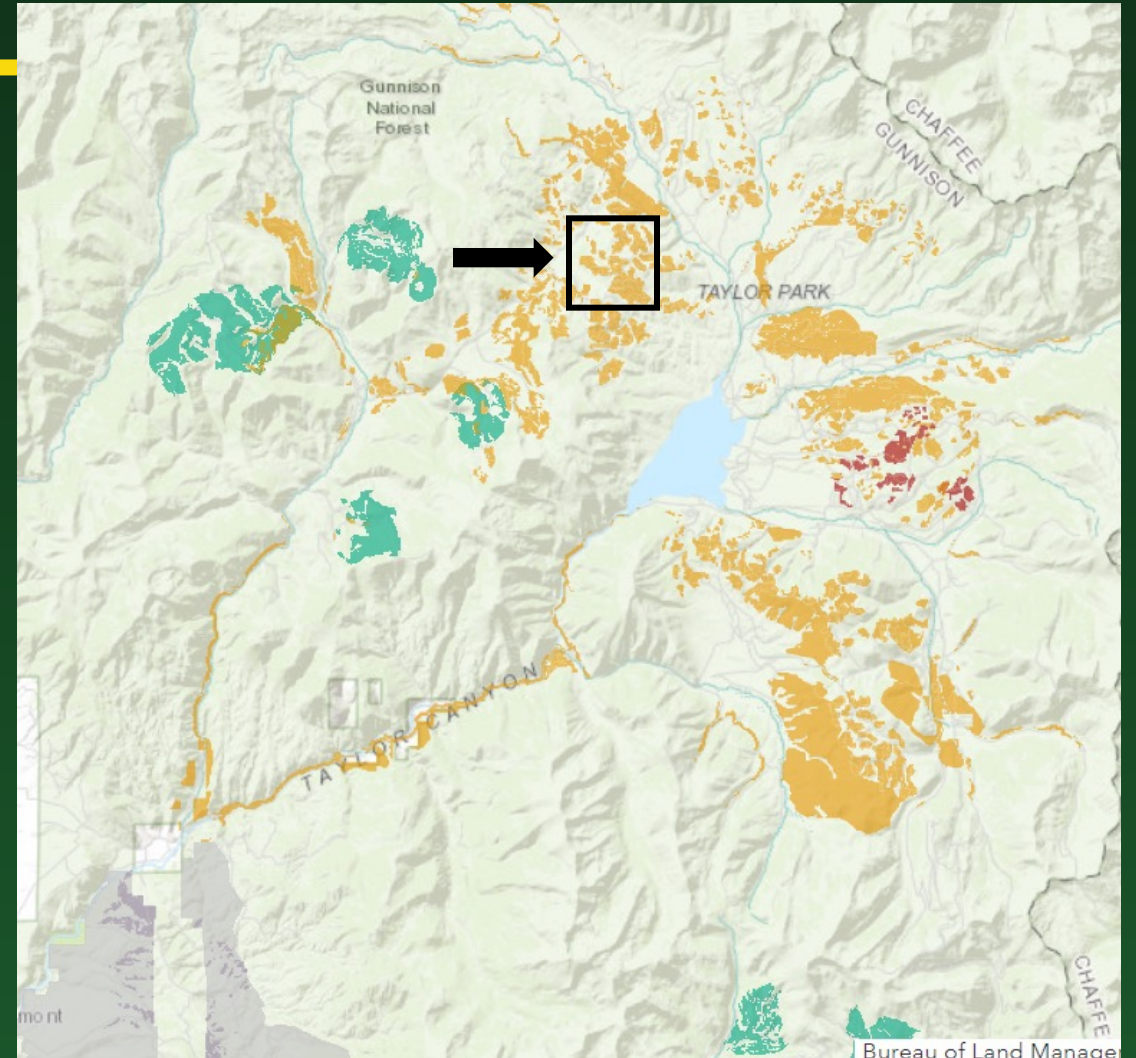
Taylor Park EA Objectives

- 1) Increase the forest's ability to respond to multiple and interactive forest stressors including climate change, drought, insect attack, or disease



Taylor Park EA Objectives

- 1) **Increase the forest's ability to respond to multiple and interactive forest stressors including climate change, drought, insect attack, or disease**
- 2) **Treat stands to improve forest health** using commercial harvest, non-commercial, and prescribed fire treatments, as appropriate, to the site-specific situation
- 3) **Reduce fuels** in the wildland-urban interface to allow for the facilitation of natural fire processes on the landscape
- 4) **Provide wood products** for the local economy, which relies on wood fiber harvested sustainably from public lands



Taylor Park EA Desired Future Conditions

Landscape Level

The desired future condition is a ***healthy forest landscape consisting of a mosaic of even-aged, two-aged, and uneven-aged stands as appropriate*** to the site-specific conditions and species composition, and with a balance of stand age classes represented ranging from young forest to overmature forest.

Taylor Park EA Desired Future Conditions

Lodgepole Pine Dominated Stands

Early	Early-Mid	Late-mid/Late
17-44%	31-45%	18-43%

Seral Stage DFCs

- Maintain healthy even-aged, single-storied to two-storied stands
- Regenerate stands to lodgepole pine with a light component of other tree species becoming established in the future
- If planting is necessary, consider a mixture of lodgepole pine, Douglas-fir, ponderosa pine, and limber pine at lower elevations. At higher elevations, consider a mixture of lodgepole pine, Engelmann spruce, and limber pine.
- Dwarf mistletoe ratings should be kept at DMR=0 if possible
- Stand density index should be maintained from 200 to 300

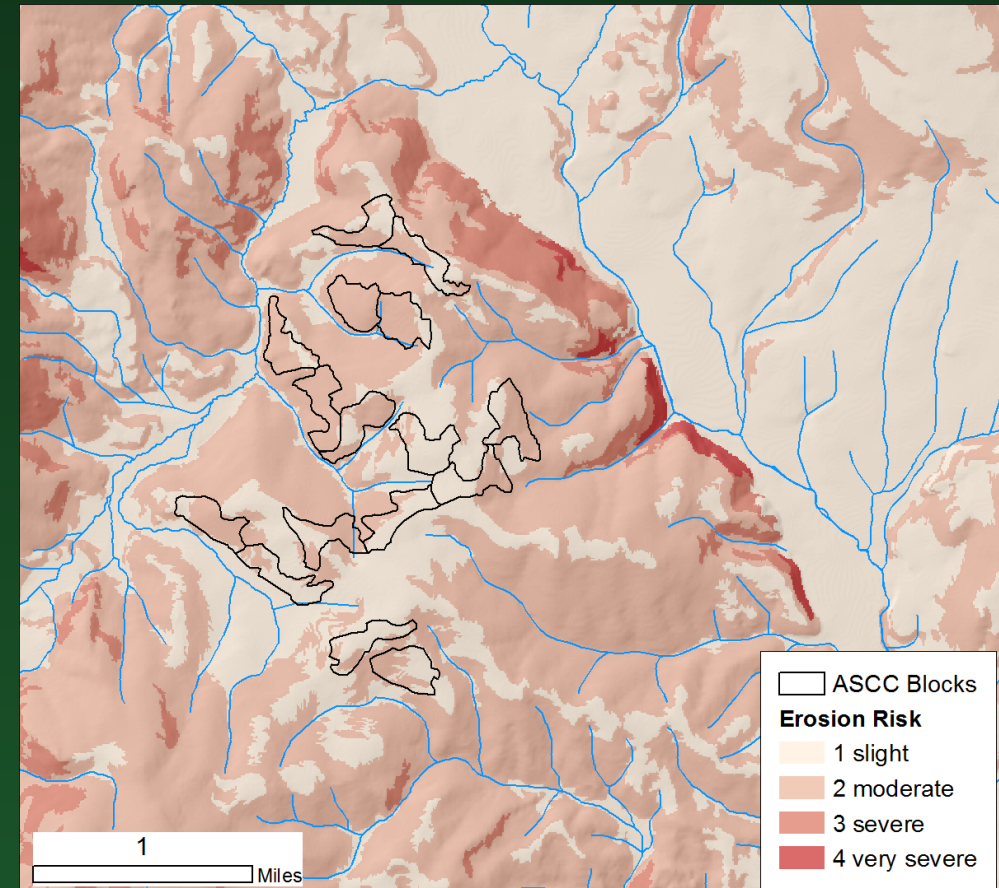
Taylor Park EA Soil & Water Objectives

- Maintain ground cover, long-term stream health, riparian ecosystem condition, soil structure, water budgets, and flow patterns of wetlands.
- Limit roads and other disturbed sites to the minimum feasible number, width, and total length.
- Construct roads to minimize sediment discharge, stabilizing and maintaining roads during and after construction, and reclaiming roads, landings, and other disturbed sites.

Soil & Water

- Modeled erosion risk (2011) – slight to moderate risk within the project area

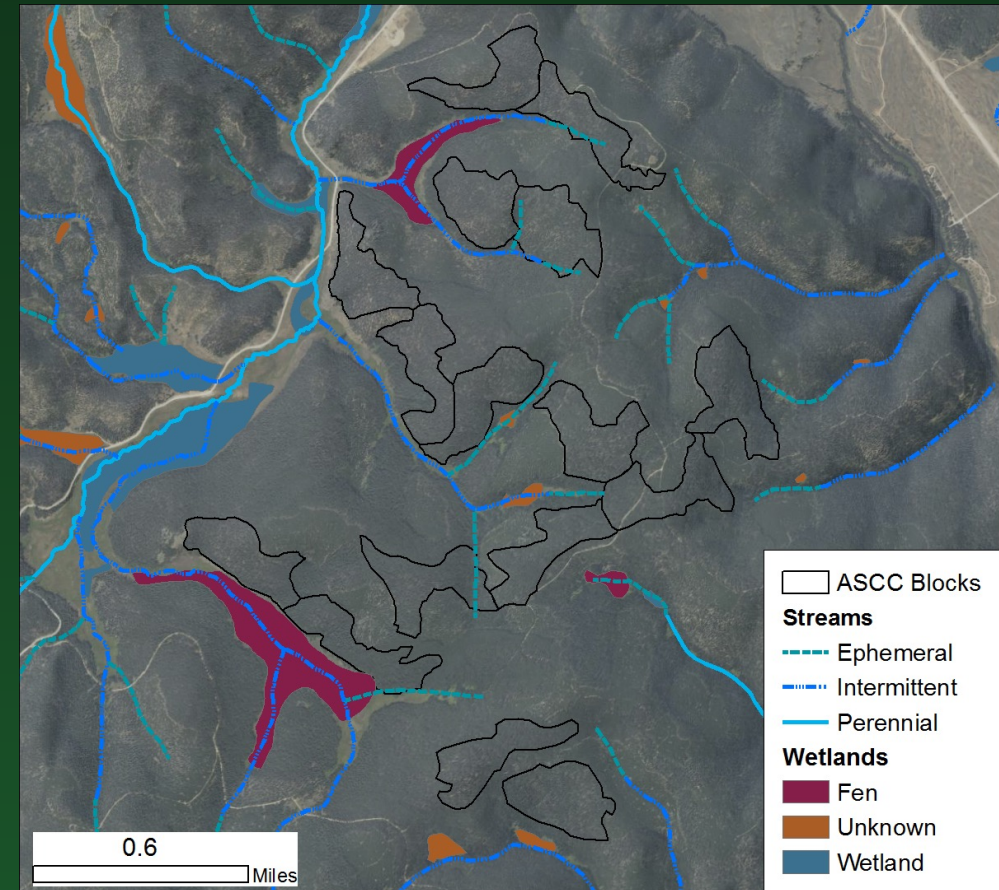
Map Unit Name	Acres in AOI	Percent of AOI
Cryaquolls and histosols	3.0	0.7%
Dinnen sandy loam, 2 to 60 percent slopes	190.9	43.4%
Rock land	8.6	2.0%
Schofield-Peeler gravelly sandy loams, 5 to 25 percent slopes	81.8	18.6%
Stecum stony sandy loam, 15 to 70 percent slopes	154.8	35.2%
Teoculli loam, 0 to 25 percent slopes	0.4	0.1%
	439.5	100.0%



Soil & Water

- Treatment design will follow fen, wetland, and riparian buffers outlined in the Taylor Park treatment checklist

Feature type	Harvest/Mechanical travel buffer
Wetlands (incl. fens)	100 ft from edge
Perennial streams	50 ft from stream bank
Intermittent streams, reservoirs, ponds	25 ft from bank or high water mark
Springs, seeps, wetlands < ¼ acre	25 ft from source or edge (whichever greater)

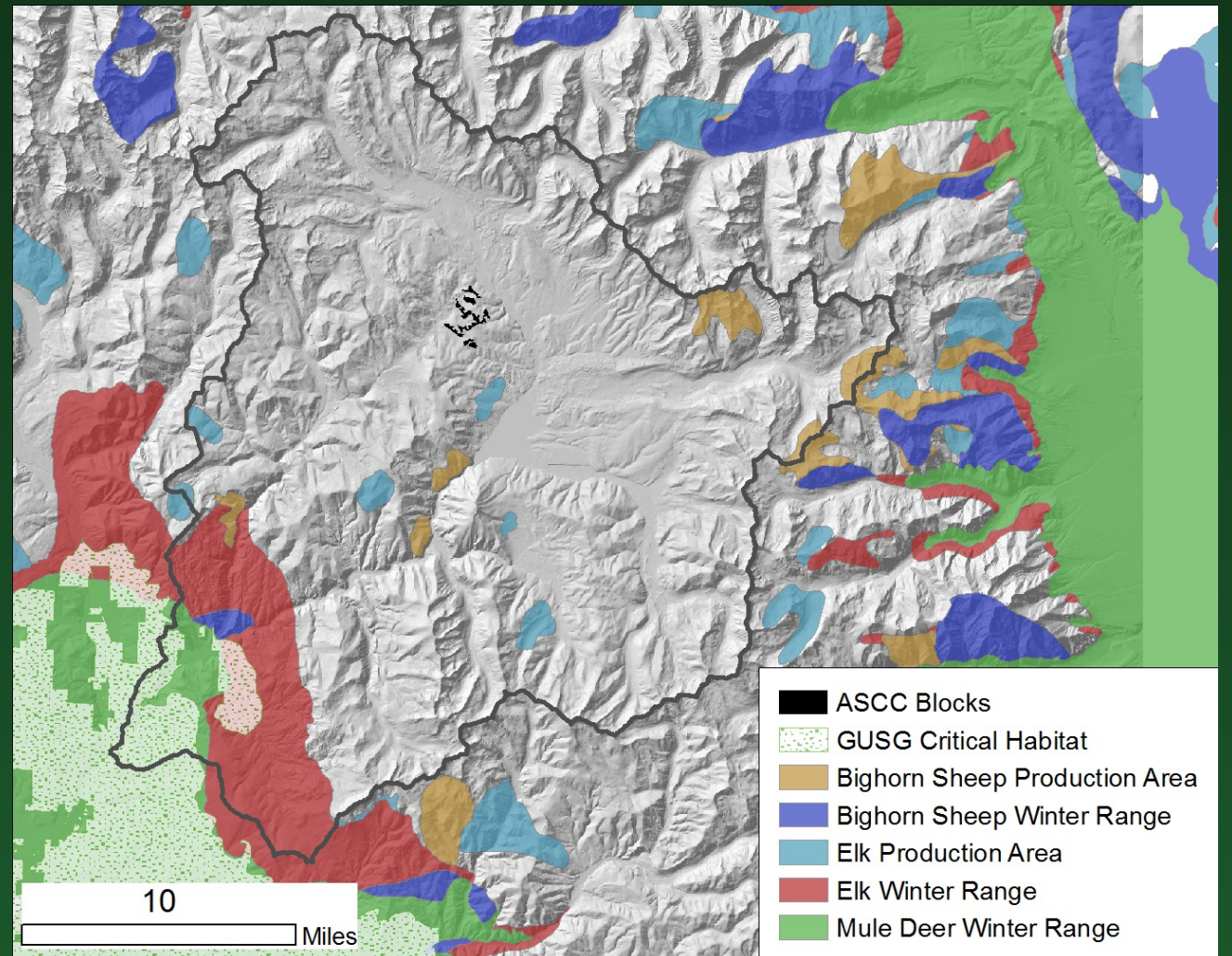


Taylor Park EA Wildlife Objectives

- Design treatments to meet objectives and standards of the Southern Rockies Lynx Amendment and forest plan standards and guidelines related to wildlife.
- Seek opportunities to integrate wildlife habitat management objectives as part of treatment activities.

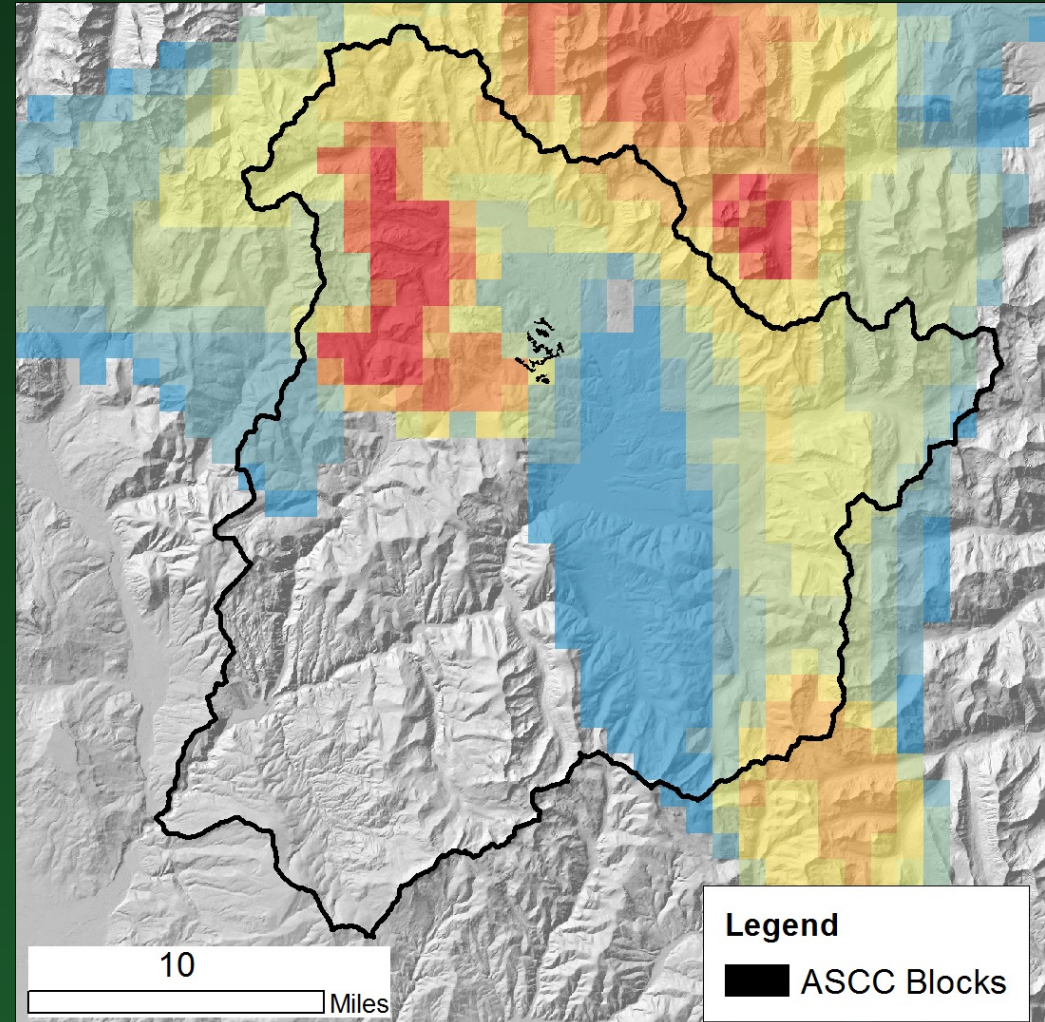
Wildlife

- Sage grouse critical habitat, bighorn, elk, and mule deer winter range, and bighorn and elk production areas in the Taylor River watershed but not within the ASCC project area.



Wildlife - Lynx

- ASCC project area in modeled low/medium lynx use area; fairly close to high use area



General Wildlife

- Wildlife species in the Taylor Park landscape

