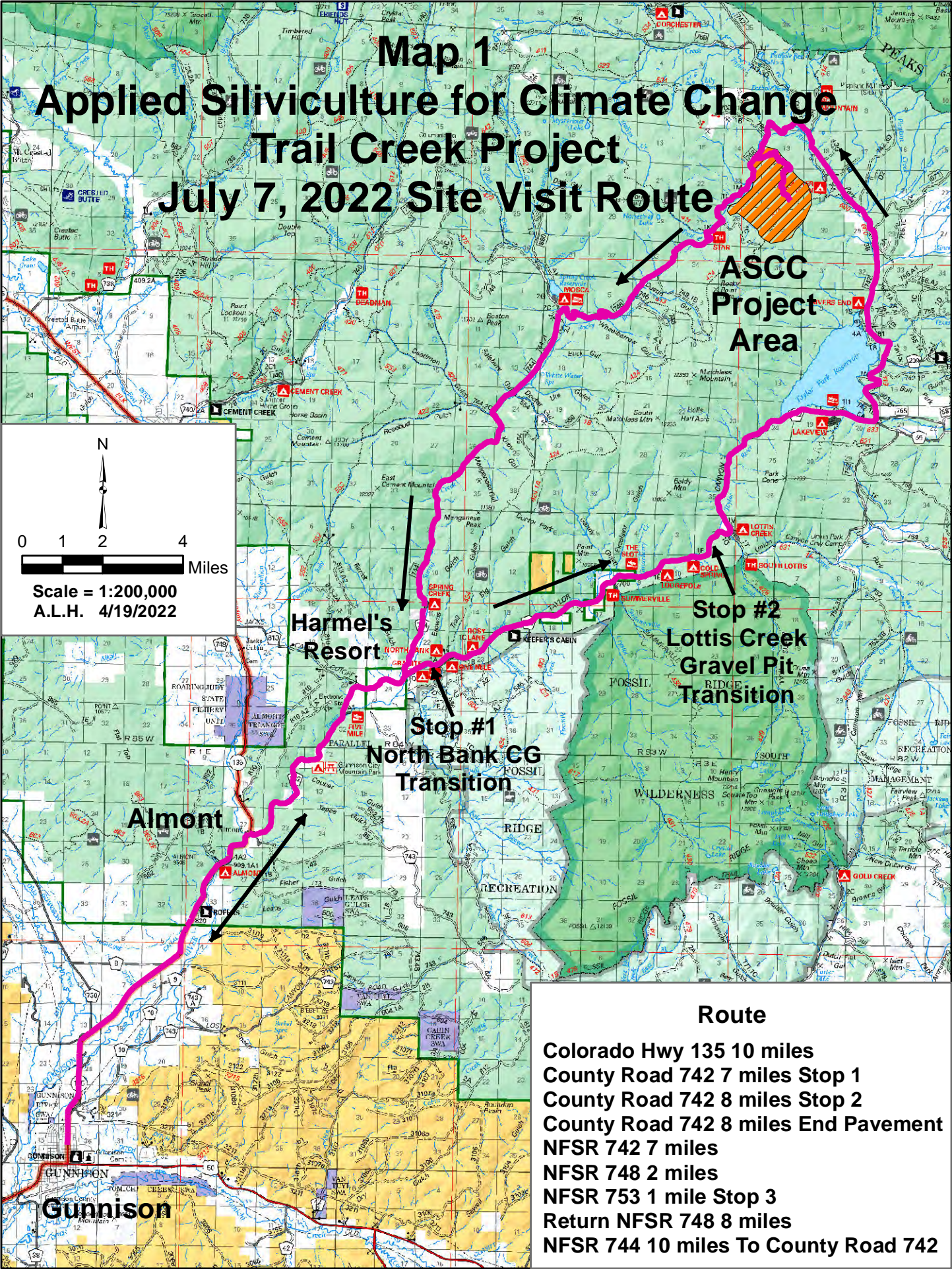


# Map 1

## Applied Silviculture for Climate Change

### Trail Creek Project

#### July 7, 2022 Site Visit Route



**ASCC  
Project  
Area**

**Harmel's  
Resort**

**Stop #2  
Lottis Creek  
Gravel Pit  
Transition**

**Stop #1  
North Bank CG  
Transition**

**Almont**

**Gunnison**

### Route

- Colorado Hwy 135 10 miles
- County Road 742 7 miles Stop 1
- County Road 742 8 miles Stop 2
- County Road 742 8 miles End Pavement
- NFSR 742 7 miles
- NFSR 748 2 miles
- NFSR 753 1 mile Stop 3
- Return NFSR 748 8 miles
- NFSR 744 10 miles To County Road 742